



PRC 建设
PACIFIC RIM CONSTRUCTION

Build4Asia
AWARDS
2026

亞太建築及設計大獎

Green Vision, Smart Design, Celebrated Excellence!

Timeline

Open for Entry: 1 Aug 2025

Submission Deadline: 28 Nov 2025

Judging Period: 1 Jan – 30 Jan 2026

Announcement of Entries (e-catalogue): 1 Mar 2026

Awards Presentation Ceremony at Build4Asia Exhibition: Mid May 2026

Display at Build4Asia Exhibition (HKCEC): Mid May 2026

Introduction

Green Vision, Smart Design, Celebrated Excellence!

Jointly organized by **Build4Asia** and **PRC Magazine**, the prestigious **Build4Asia Awards 2026** celebrate architectural brilliance, cutting-edge innovation, and groundbreaking achievements in sustainability.

Split into two dynamic categories—**Building** and **Innovation**—the awards spotlight **developers, architects, interior designers, contractors, engineers, manufacturers, and industry leaders** who have set new benchmarks in delivering high-quality, sustainable projects.

New for 2026, the **Social Impact Design Award** will commend designers who create vibrant community hubs that foster culture, education and social connection.

The highly coveted **Top Jury Prize** — the **Excellence in Sustainability Award** — is reserved for the project that demonstrates unparalleled achievement in sustainable design and environmental responsibility.

With the built environment evolving faster than ever, **Build4Asia Awards 2026** will showcase the visionaries shaping the future.

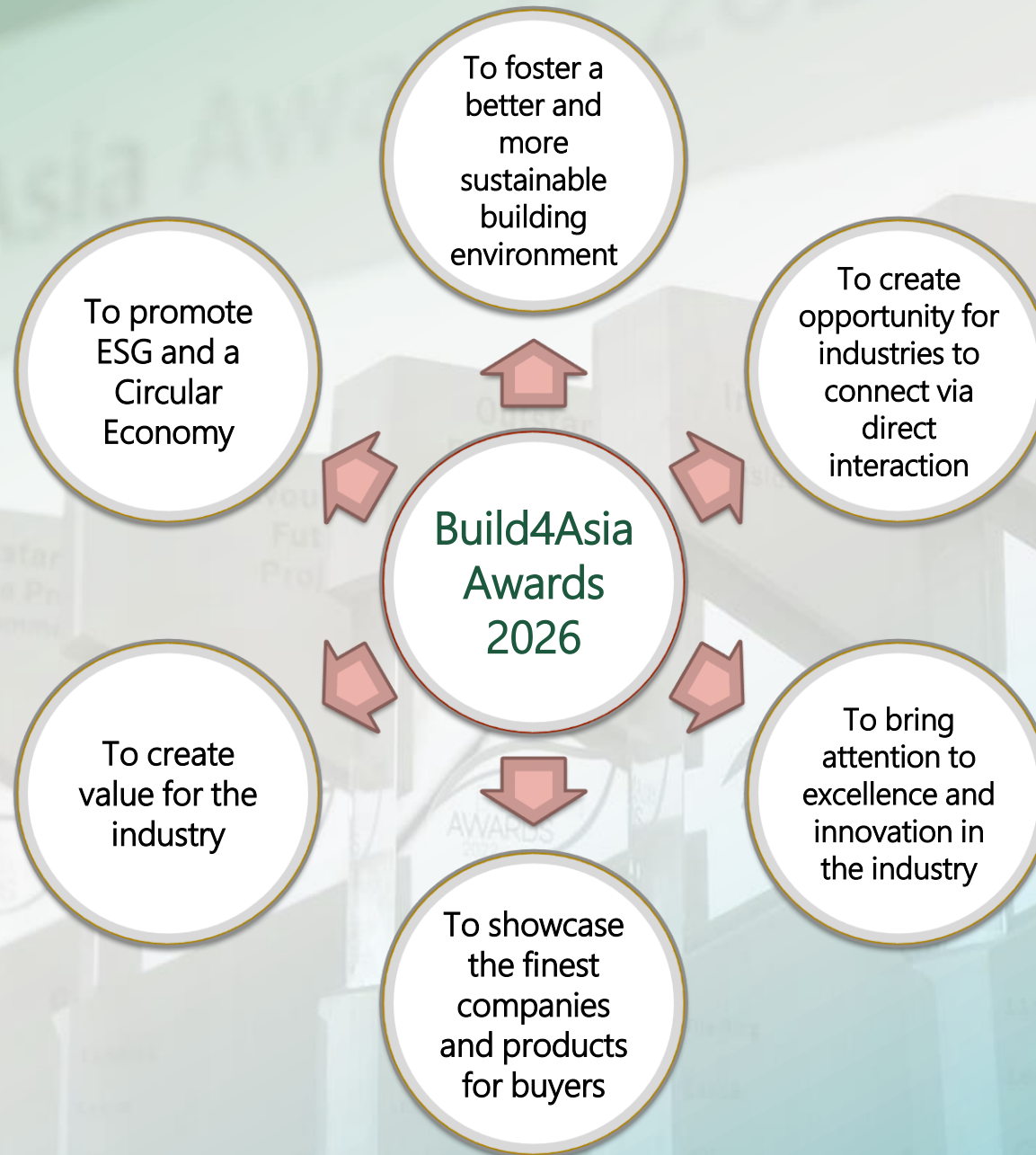


Organisers:

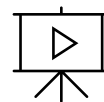
PRC 建设
PACIFIC RIM CONSTRUCTION

Build4Asia
2026 uifi
Award Event

Aims



Flashback: 2020 to 2024



Please click on the logos to see the 2020 to 2024 events & winners

Judging Criteria

Innovation in Design and Materials – Celebrating bold creativity and forward-thinking solutions.

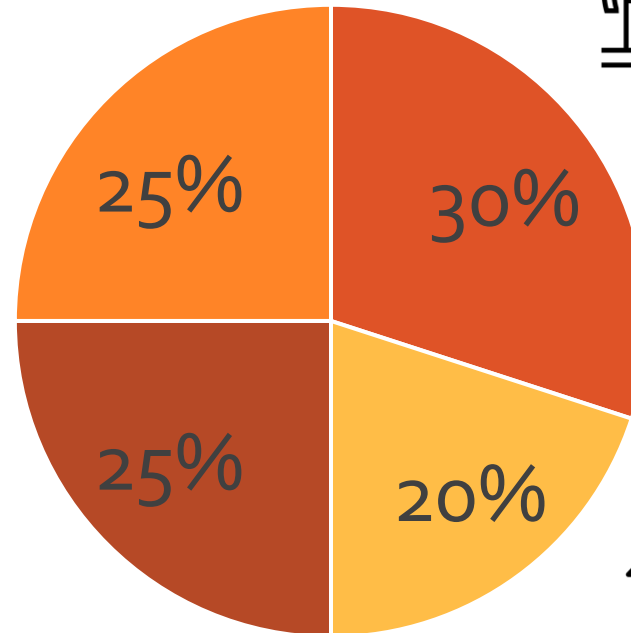


- Recognizes originality in architectural or engineering design
- Highlights the use of cutting-edge materials or construction techniques
- Rewards projects that challenge conventional norms and set new benchmarks

Demonstration of Excellence – Honouring precision, quality, and execution at the highest level.



- Assesses craftsmanship, technical proficiency, and attention to detail
- Evaluates project delivery, functionality, and user experience
- Acknowledges outstanding teamwork and project management



Sustainability – Championing environmental responsibility and long-term impact.

- Measures energy efficiency, carbon footprint reduction, and resource optimization
- Considers lifecycle performance and adaptability to future needs
- Rewards integration of green technologies and sustainable design principles

Contribution to the Industry – Recognizing influence, leadership and knowledge-sharing.



- Evaluates how the project advances industry standards or inspires peers
- Considers educational value, replicability, and community engagement
- Highlights contributions to workforce development or policy innovation



The Build4Asia Awards 2026 Jury

Building Categories

PRC 建设
PACIFIC RIM CONSTRUCTION

Build  Asia



Cary Lau
Global Design Principal
Aedas



Stephen Chow
Managing &
Creative Director
CAN Design



Glory Wang
Managing Director
Atelier Pacific



Simon Chan
President
Hong Kong
Façade Association



Hugh Brennand
Managing Director,
Buildings | Asia
Egis & Inhabit



Wisely Suen
Director – Architecture
Lead8



Alan Cheung
Managing Director
One Bite Design Studio



David Morris
Practice Director
PMDL Architecture
& Design



Wai Tang
Founding Partner
QUAD studio



Nicolas Medrano
Design Principal
SOM



Mike Kavanagh
COO
S&techs



Hyuk Chan, Kwon
Co-founder
WITHWORKS Architects
& Engineers

Innovation Categories will be judged by the organising committee.

Supporting Organisations



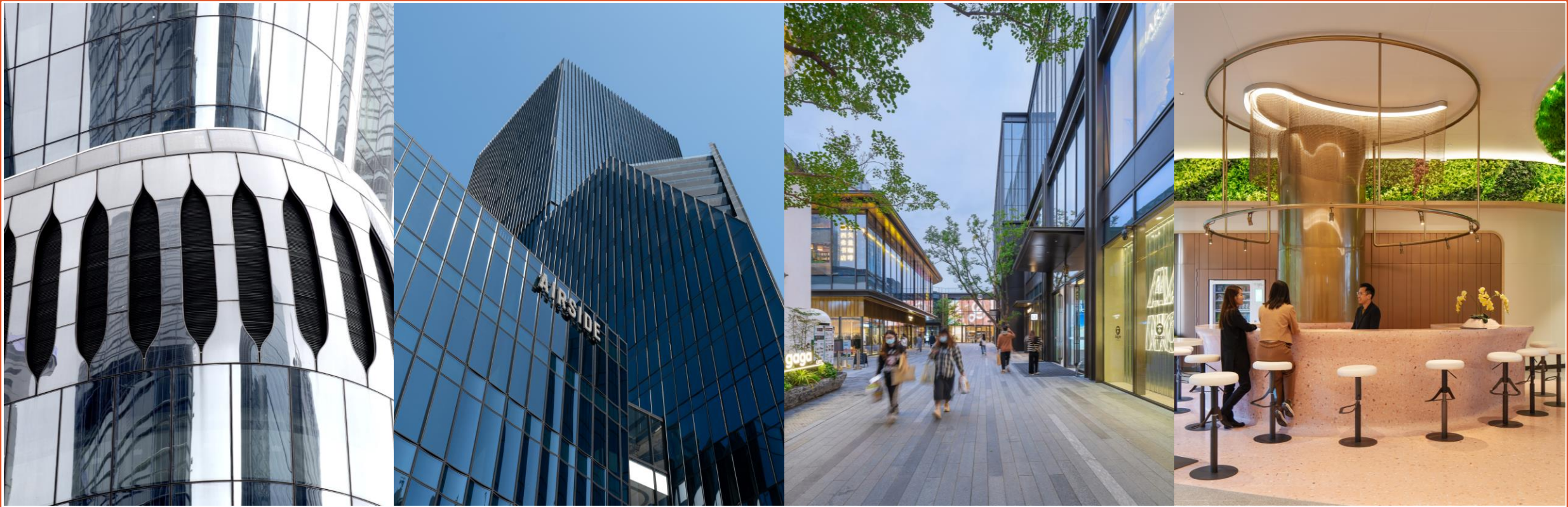
Hong Kong **FACADE** Association
香港建築幕牆裝飾協會



IFMATM Hong Kong
Chapter
International Facility Management Association



Lighthouse
CLUB
HONG KONG
明建會香港



BUILDING CATEGORIES

Building Categories



Architecture

- Commercial (Completed)
- Residential (Completed)
- Retail / Shopping Mall (Completed)
- Hotels / Resorts (Completed / More than 100 rooms)
- Boutique Hotels (Completed / Less than 100 rooms)
- Non-Commercial / Civic (Completed)
- Projects outside of Hong Kong (Completed)

The developments must be completed in the period between Jan 2023 and before Dec 2025.

- Future Projects (Commercial and Residential)

Future Projects are any types of development where construction has commenced or is scheduled to commence soon.



Interior Design

- Office / Workplace (Completed)
- Residential (Completed)
- Clubhouse (Completed)
- Restaurant / Bar (Completed)
- Flagship Store / Outlet (Completed)
- Projects outside of Hong Kong (Completed)

The development must be completed in the period between Jan 2023 and before Dec 2025.

Up to 3 winners will be announced for each category

Building Categories



Social Impact Design Award

The award will commend architects and designers who create vibrant community hubs that foster culture, education and social connection.



Planning Proposal

Masterplan design schemes must have been submitted for developer approval after Jan 2022 and have been signed off as the chosen development plan.



Excellence in Façades

The building façades must have been completed in the period between Jan 2023 and Dec 2025. Developers, architects and contractors may all enter.



Hong Kong **FACADE** Association
香港建築幕牆裝飾協會



Excellence in Health & Safety Award

Contractors must demonstrate a superior culture of site safety from project managers and project teams based on training, innovation & use of technology.

These Awards may include entries from Hong Kong and across Asia

Up to 3 winners will be announced for each category

Building Categories



Special Award:

Excellence in Sustainability Award

Awarded to the project that demonstrates the highest achievement in sustainability



INNOVATION CATEGORIES

Innovation Categories



Building Materials

Advanced materials that support the Circular Economy and Zero Waste—minimizing impact, maximizing reuse, and enabling a more sustainable built environment.



Security Systems

Intelligent systems designed to safeguard lives and property amid the complexities of a fast-changing world. These solutions must adapt to evolving threats, integrate seamlessly with infrastructure, and enhance resilience across public and private spaces.



Products

Innovative products or product ranges that help industry stakeholders design more efficient places to live and work, while enhancing wellness.



Technology

Innovative technologies that drive smart building automation, enable intelligent living, and integrate Modular Integrated Construction (MiC) to advance a greener, more sustainable built environment.



Façade Lighting

Smart façade lighting integrates architectural expression with advanced lighting technologies to define a building's visual identity and urban presence. Systems should deliver precise illumination, energy efficiency, and responsive control while reinforcing design intent.



Why should I join the Awards?



Special feature in the Build4Asia Awards catalogue, available both in print and online and reaching over 200,000 readers



Pre-show exposure on Build4Asia website during online voting



Pre-show exposure on Build4Asia and PRC Magazine's social media platforms



Product / project submission displayed at Build4Asia exhibition zone



Recognition by the industry / Exposure to the industry



Promote your goods and services to the public and the industry



Exclusive Invitation to the Awards Presentation Ceremony

Prizes for Winners

Build4Asia Awards Trophy and Digital Certificate



Exclusive rights to use the Build4Asia Awards logo for promotion

Special coverage in PRC Magazine, print + online version

Special feature on Build4Asia and PRC Magazine's websites

Dedicated posts on Build4Asia, PRC Magazine's social media platforms

Special feature in post-event e-newsletters, sent to Build4Asia and PRC Magazine's database of online readers

How can I join the Awards?



Contact your Awards Coordinator
(See contacts on last page)



Reply the questions / complete the submission online



Fees (pay by cheque or bank transfer)
HK\$5000 (with two pages of editorial in the official catalogue)



Provide ONE vertical A1 size of foamboard (digital artwork) for display use. (Boards printed by organizer)

About the Organisers

Build4asia

Informa Markets creates platforms for industries and specialist markets to trade, innovate and grow. portfolio is comprised of more than 550 international B2B events and brands in markets including Healthcare & Pharmaceuticals, Infrastructure, Construction & Real Estate, Fashion & Apparel, Hospitality, Food & Beverage, and Health & Nutrition, among others.

Build4Asia is recognised as Asia's no. 1 sourcing and trading platform for the building, electrical engineering and security industries, offering a one-stop platform for market leaders to demonstrate cutting-edge technologies and solutions covering every facet of the construction services industry.



www.informamarkets.com

www.build4asia.com

PRC Magazine

Published by ROF Media, PRC Magazine is currently celebrating 23 years as Hong Kong's most widely circulated built environment publication, and one of the most comprehensive multi-disciplinary building sector titles in the Asia Pacific.

With targeted distribution to company directors and senior management, unrivalled reach into corporate offices, and long-standing partnerships with major regional trade events and industry associations, PRC Magazine stands as the pre-eminent media platform for the built environment. It is also widely accessible online through multiple business and social media channels.



Exclusive Partner to Hong Kong's AEC Industry

Since 2002

www.rofmedia.com



www.prc-magazine.com



Contact us



PRC Magazine:

Contact Person: **Mike Staley**

Email: mike@rofmedia.com

Tel: +852 3150 8989

Contact Person: **Bryan Chan**

Email: bryan@rofmedia.com

Tel: +852 3150 8912

Build4Asia Organiser:

Contact Person: **Kim Chan**

Email: kim.chan@informa.com

Tel: +852 3187 5744

Contact Person: **Anita Suen**

Email: anita.suen@informa.com

Tel: +852 +3590 6058

