



Innovative Way to Harvest More Renewable Energy in Sewage Treatment

Mr. Eddie S. C. MA
Drainage Services Department



PROJECT HIGHLIGHTS



INNOVATIVE
First One in HK



PIONEER
Change Mind Set



SYNERGY
Multiple Benefits



ENVIRONMENTAL
Renewable Energy

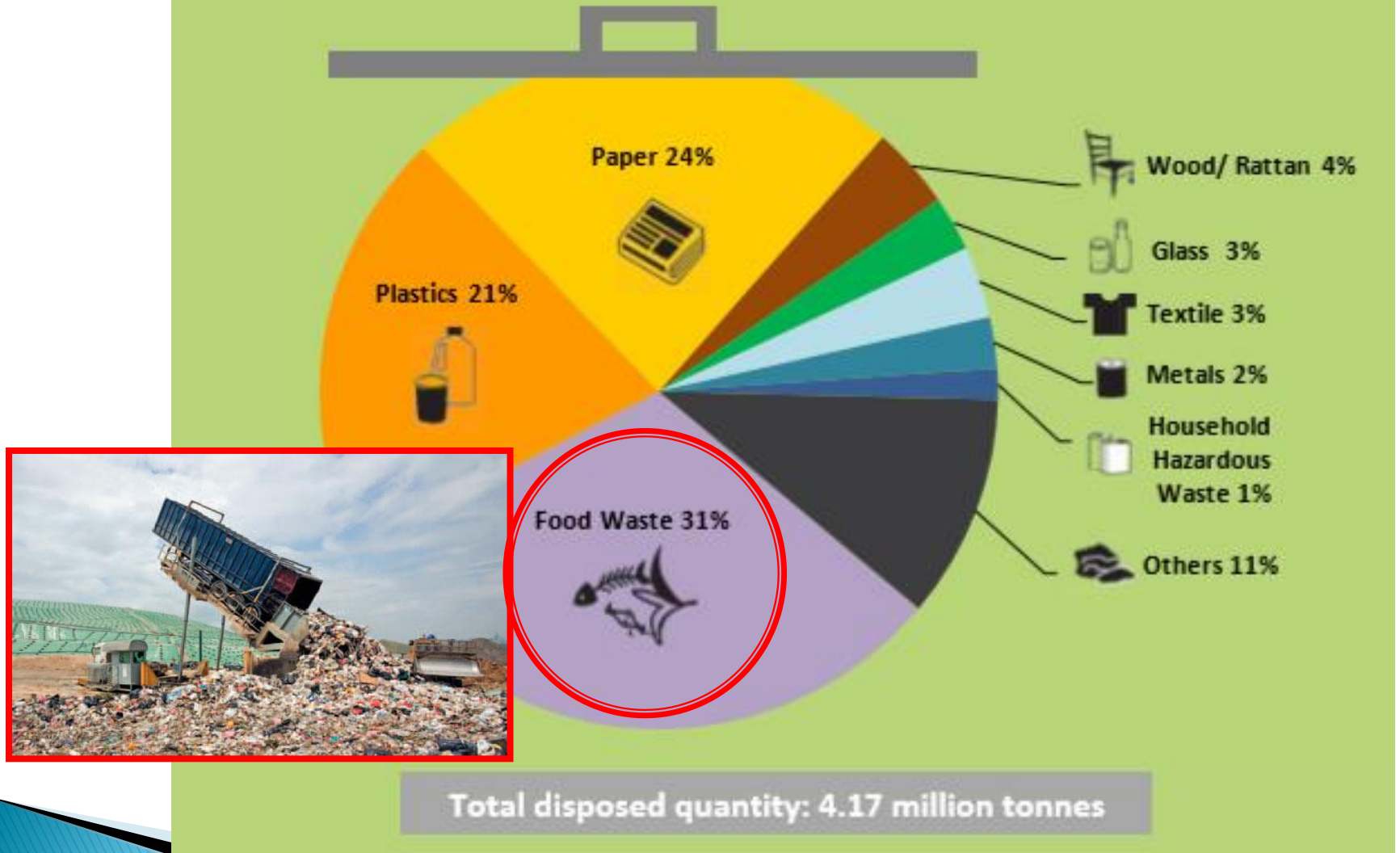


IMPROVEMENT
Smart City



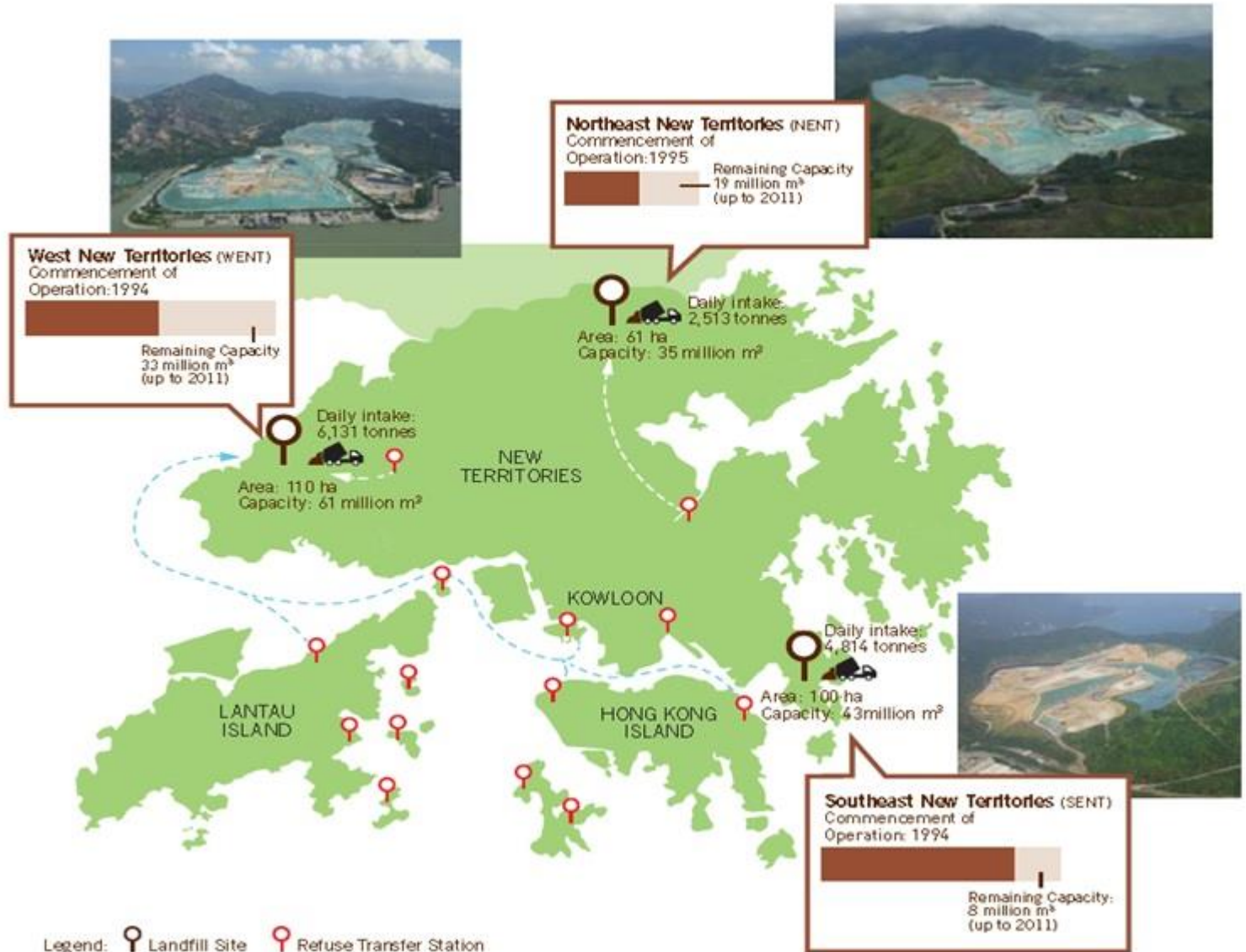
FOOD WASTE CHALLENGE

Composition of MSW Disposed of at Landfills in 2018





NO WHERE TO DUMP WASTE



Source of information: Hong Kong Blueprint for Sustainable Use of Resources 2013 - 2022



FOOD WASTE TO ENERGY



Food Waste



Sewage Sludge



Digesters

Co-digestion



Biogas



Electricity



Heat



Combined Heat and Power Generator



EXISTING FACILITIES

Existing sewage sludge anaerobic digestion systems at the Tai Po Sewage Treatment Works

Food waste pretreatment facility





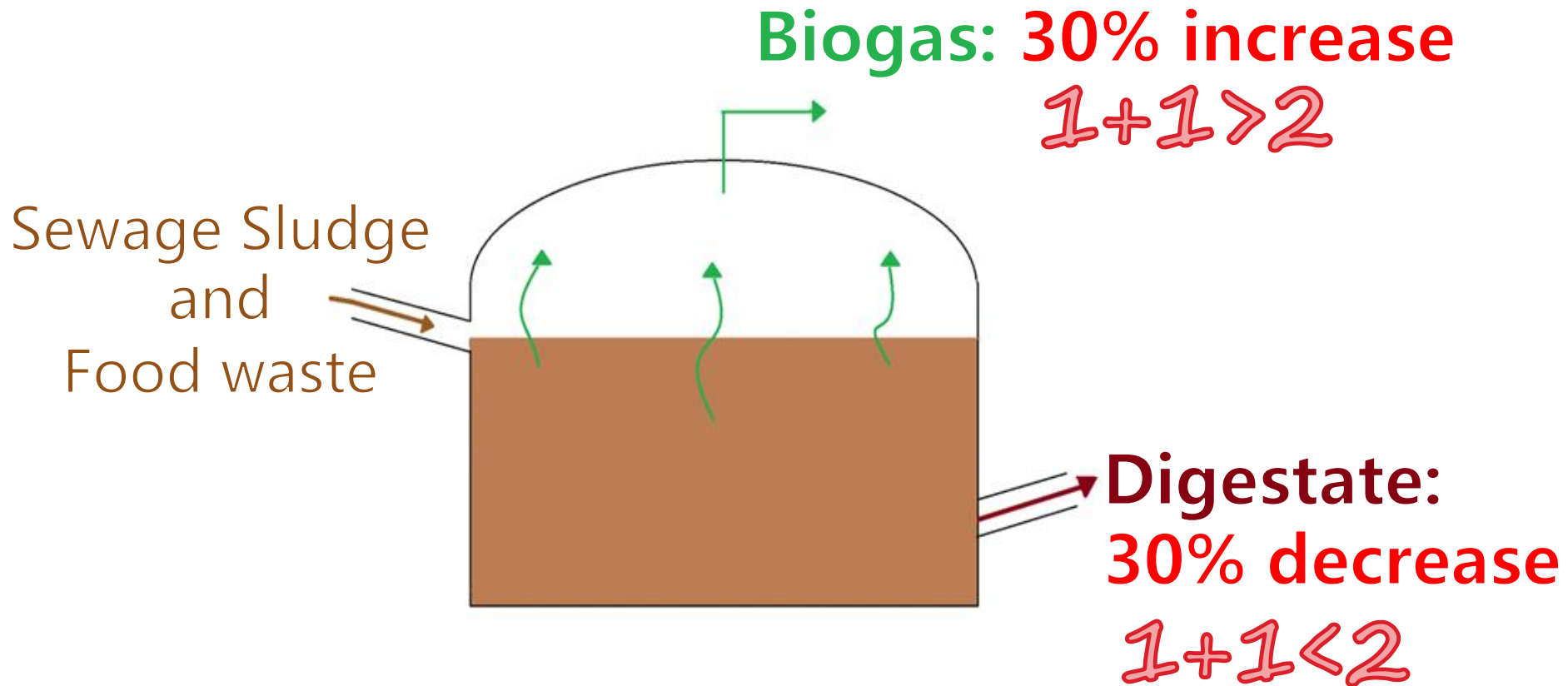
PROCESS FLOW



Drainage Services Department



SYNERGY EFFECTS



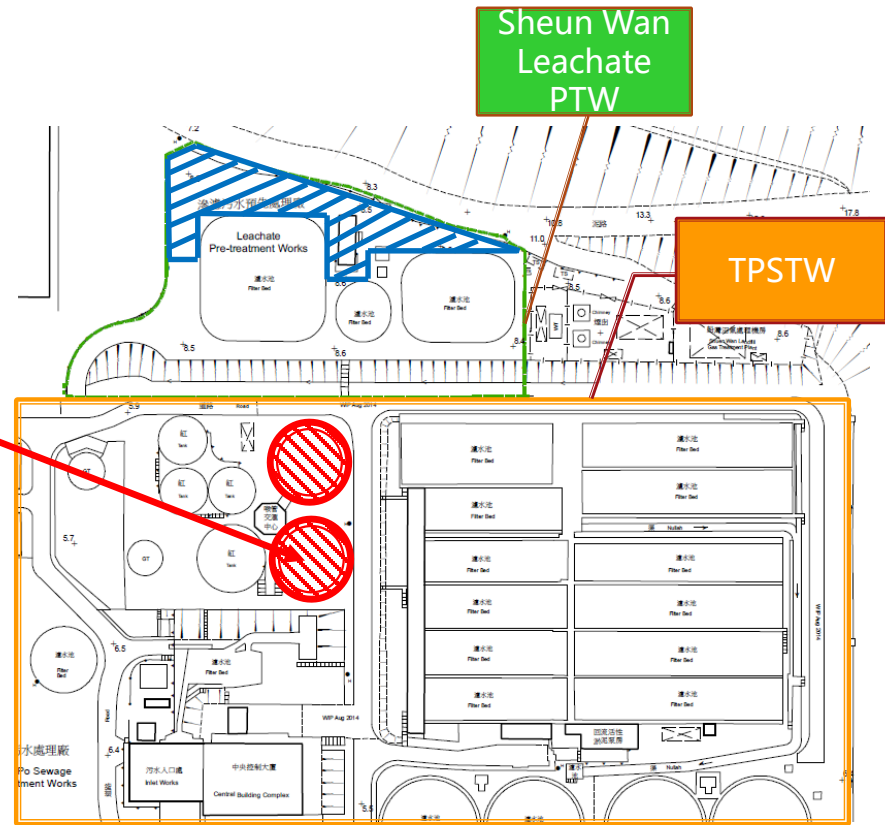
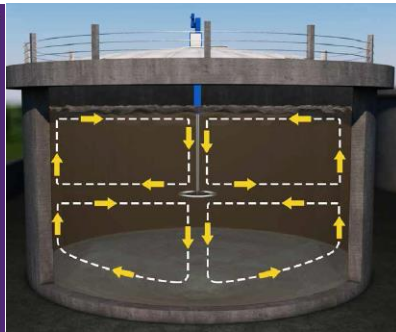
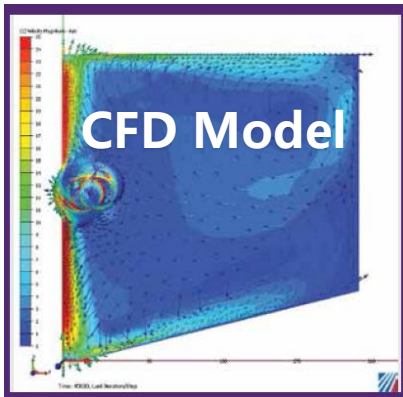


CO-DIGESTION OF FOOD WASTE AND SEWAGE SLUDGE



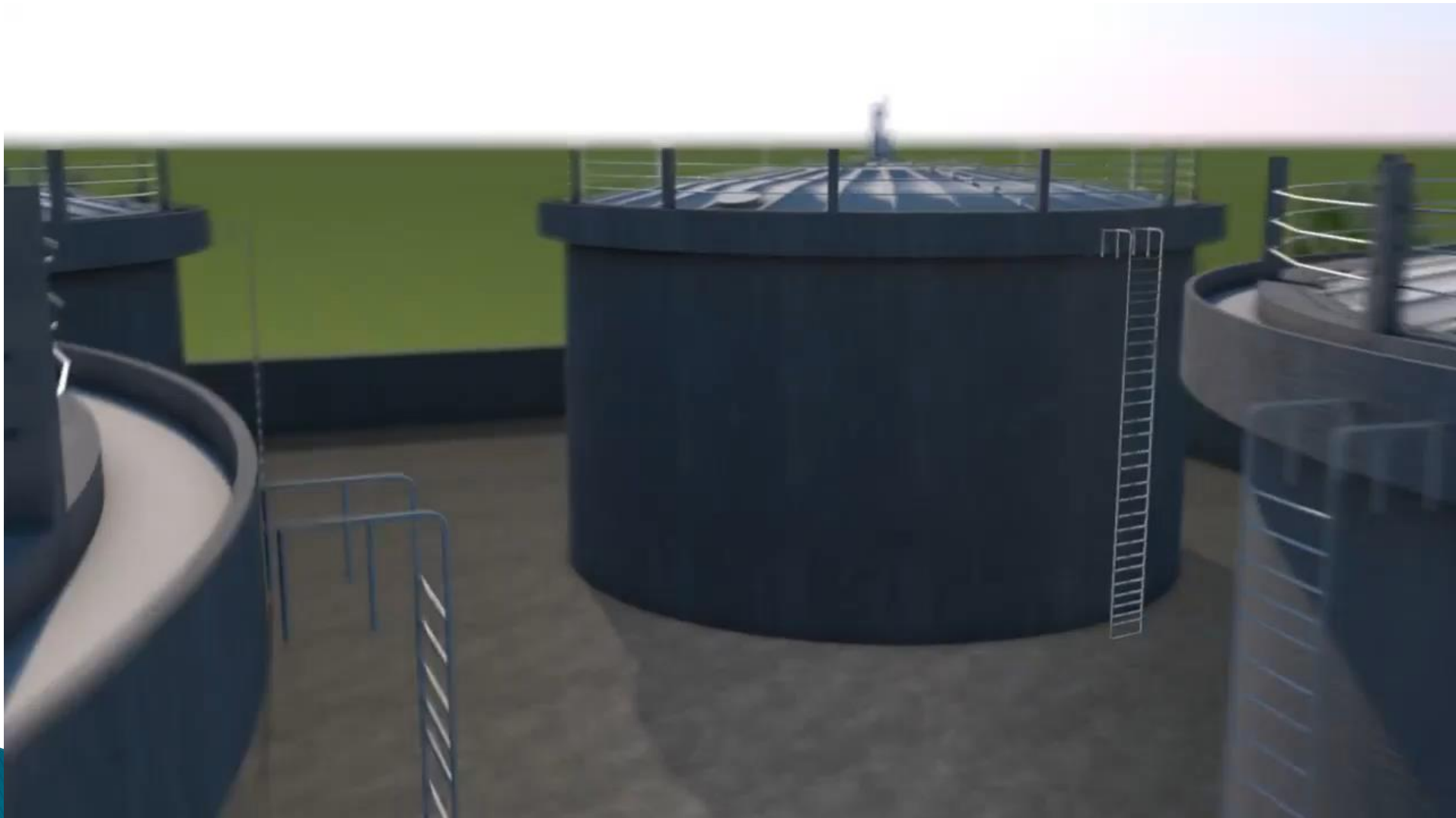
TECHNICAL KNOW-HOW

A Novel Mixer First of its Kind in Hong Kong



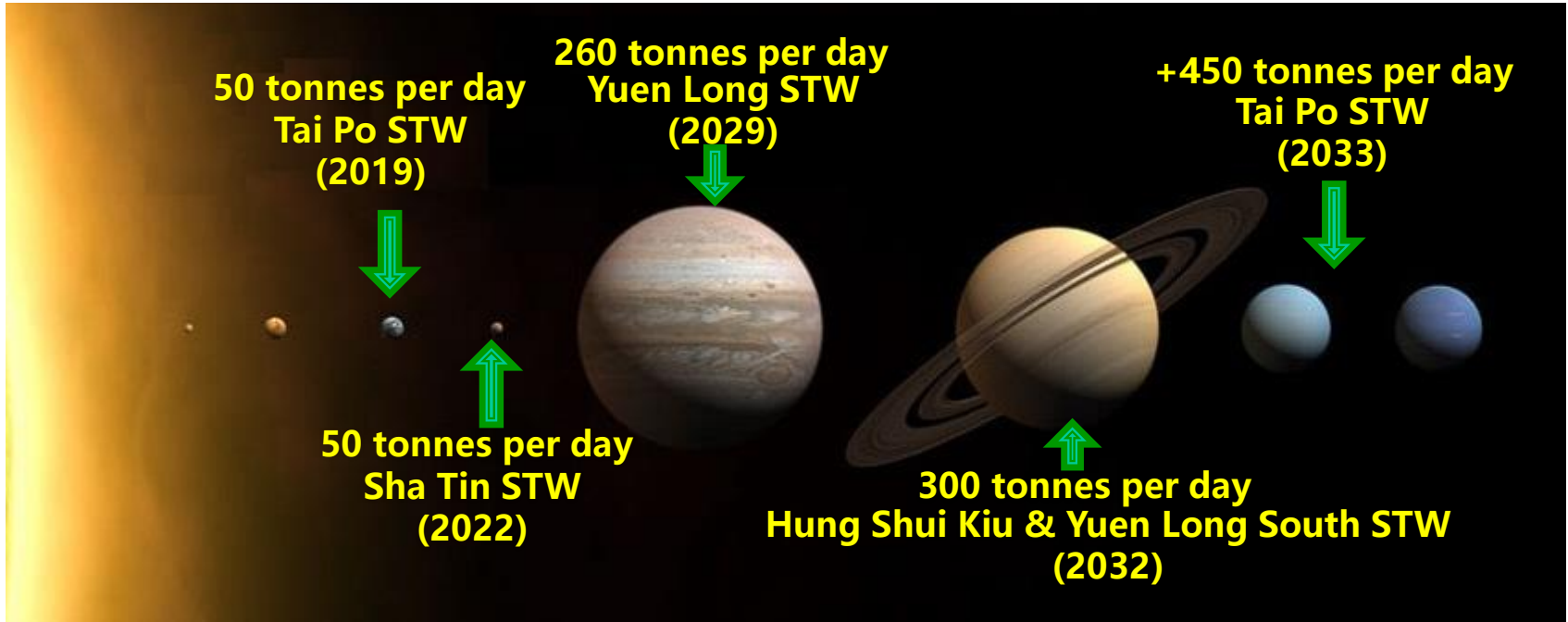


MIXER WORKING PRINCIPLE





OUR GOAL





Thank You